

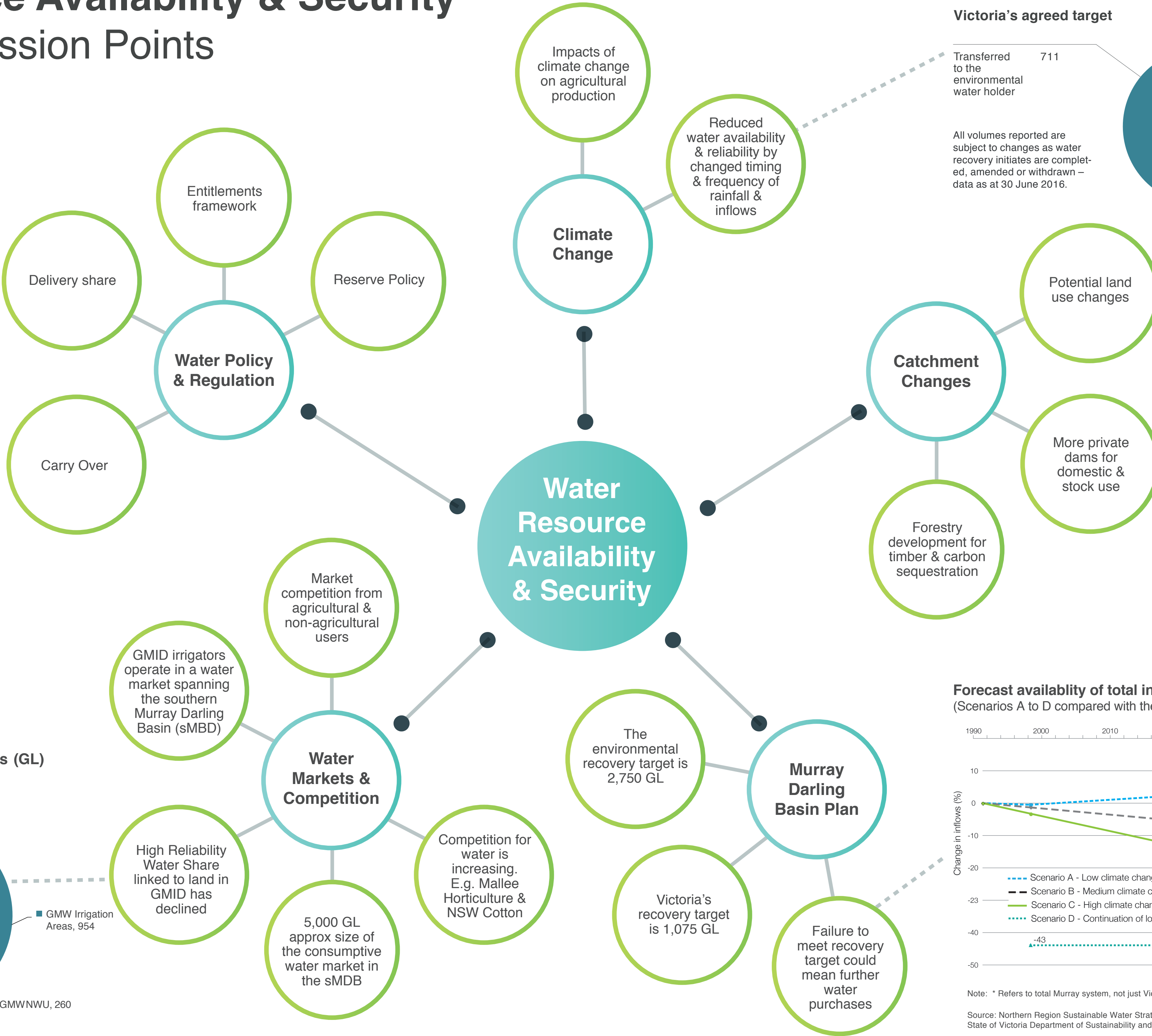
# Water Resource Availability & Security

## Drivers & Discussion Points



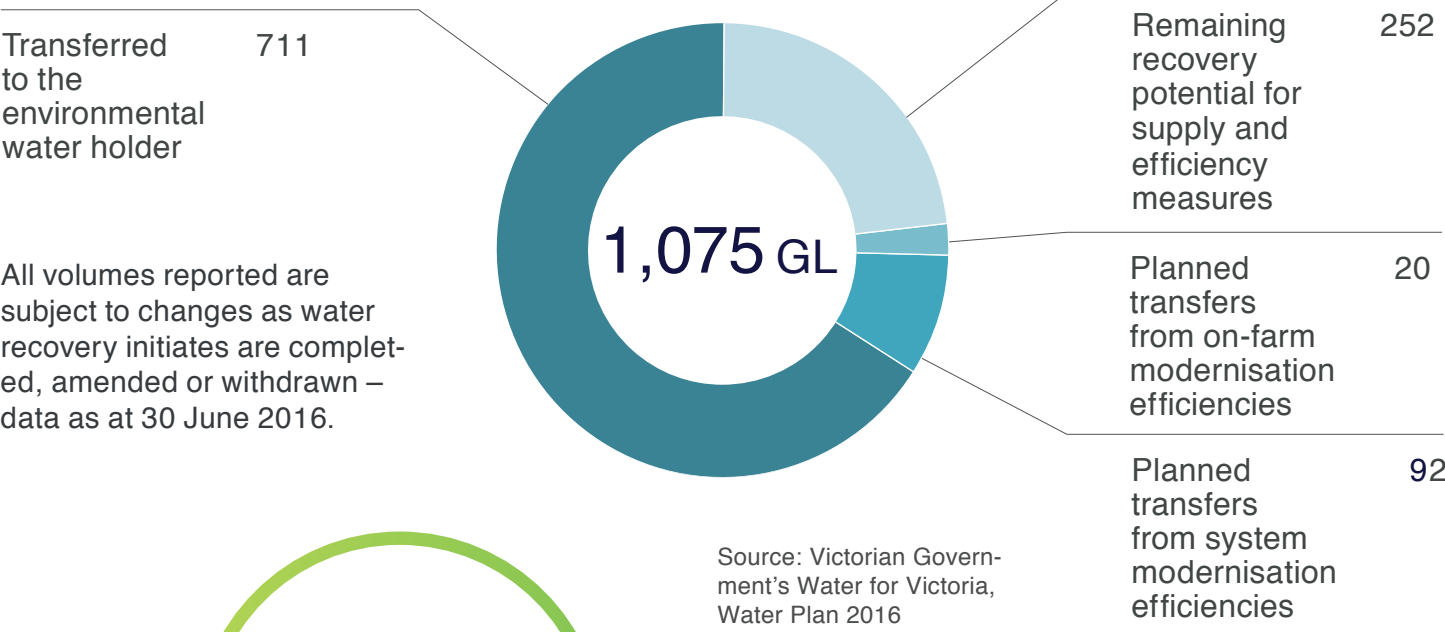
This information is designed to stimulate conversation. The comments and facts provided have been derived from comments from the Water Services Committees, Strategic Advisory Committee and the work of a number of agencies and organisations.

These comments don't necessarily represent the view of Goulburn-Murray Water.

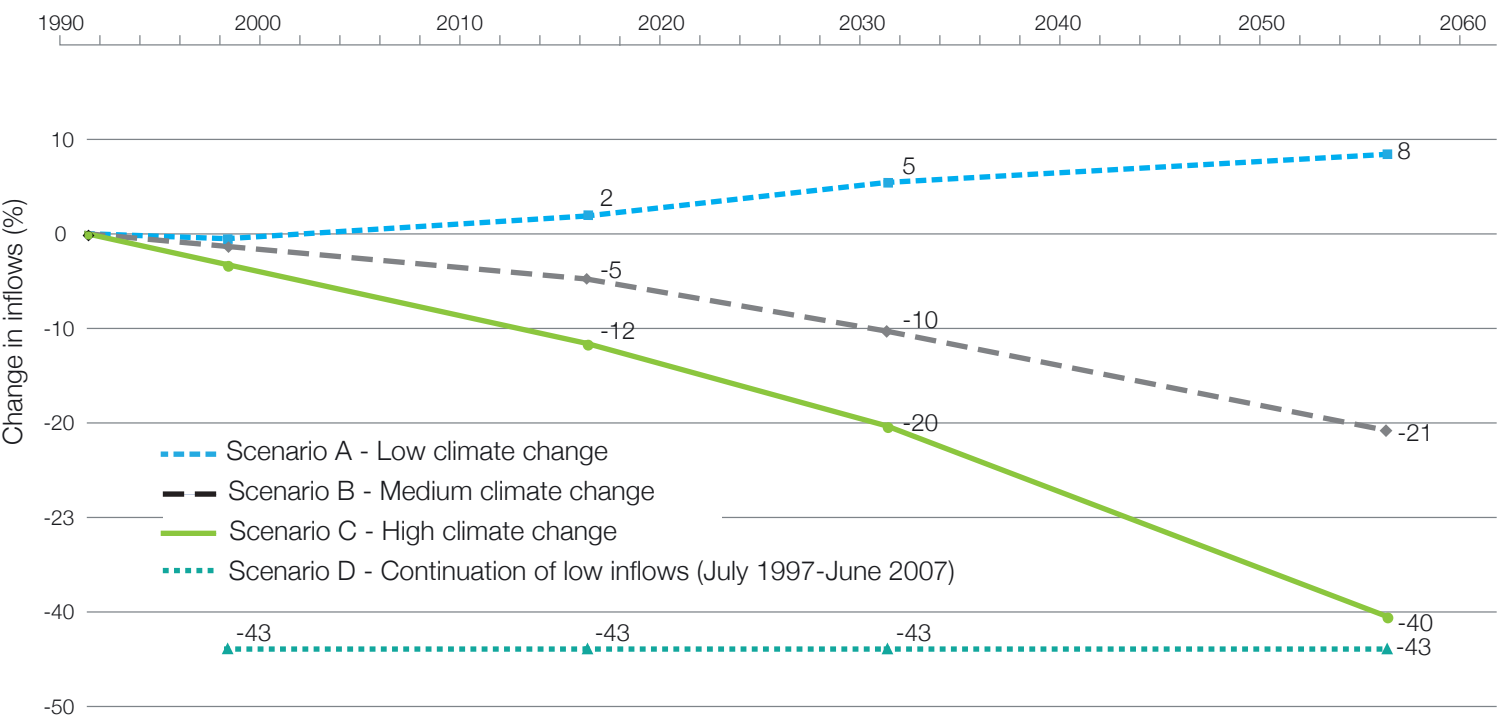


**Progress towards basin plan recovery**  
Gigalitres of water recovery for the environment as at 30 June 2016

**Victoria's agreed target**

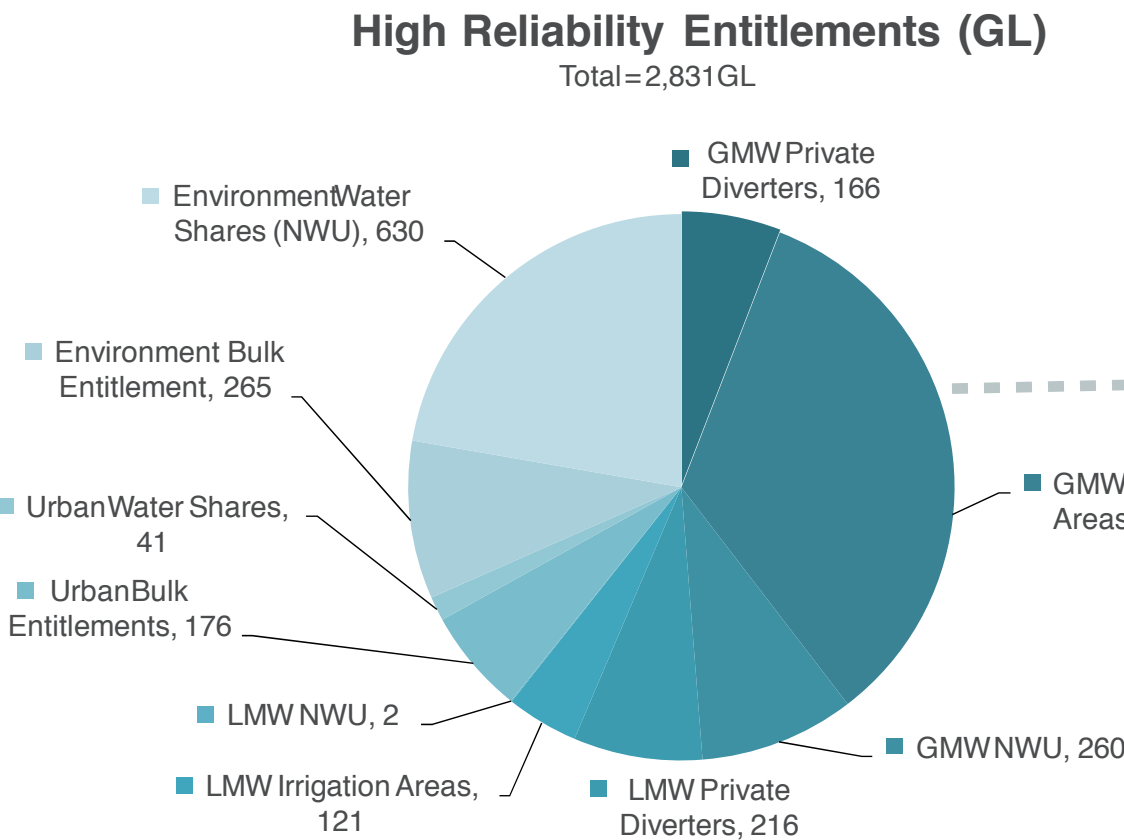


**Forecast availability of total inflows for the Murray system\* to 2055**  
(Scenarios A to D compared with the long-term average)



Note: \* Refers to total Murray system, not just Victoria's share. Data extrapolated 2009.

Source: Northern Region Sustainable Water Strategy. Published by the State of Victoria Department of Sustainability and Environment 2009.



Source: Water Resources - Regulated Entitlement Volumes  
NWU \* - Non - Water Users

1 - Based on approximate seasonal allocations to all entitlements 2008 - 2015  
Source: Aither 2016, Supply Side Drivers of Water Allocation Prices, Identifying and modelling supply side drivers of water allocation prices in the southern Murray-Darling Basin, page 16.