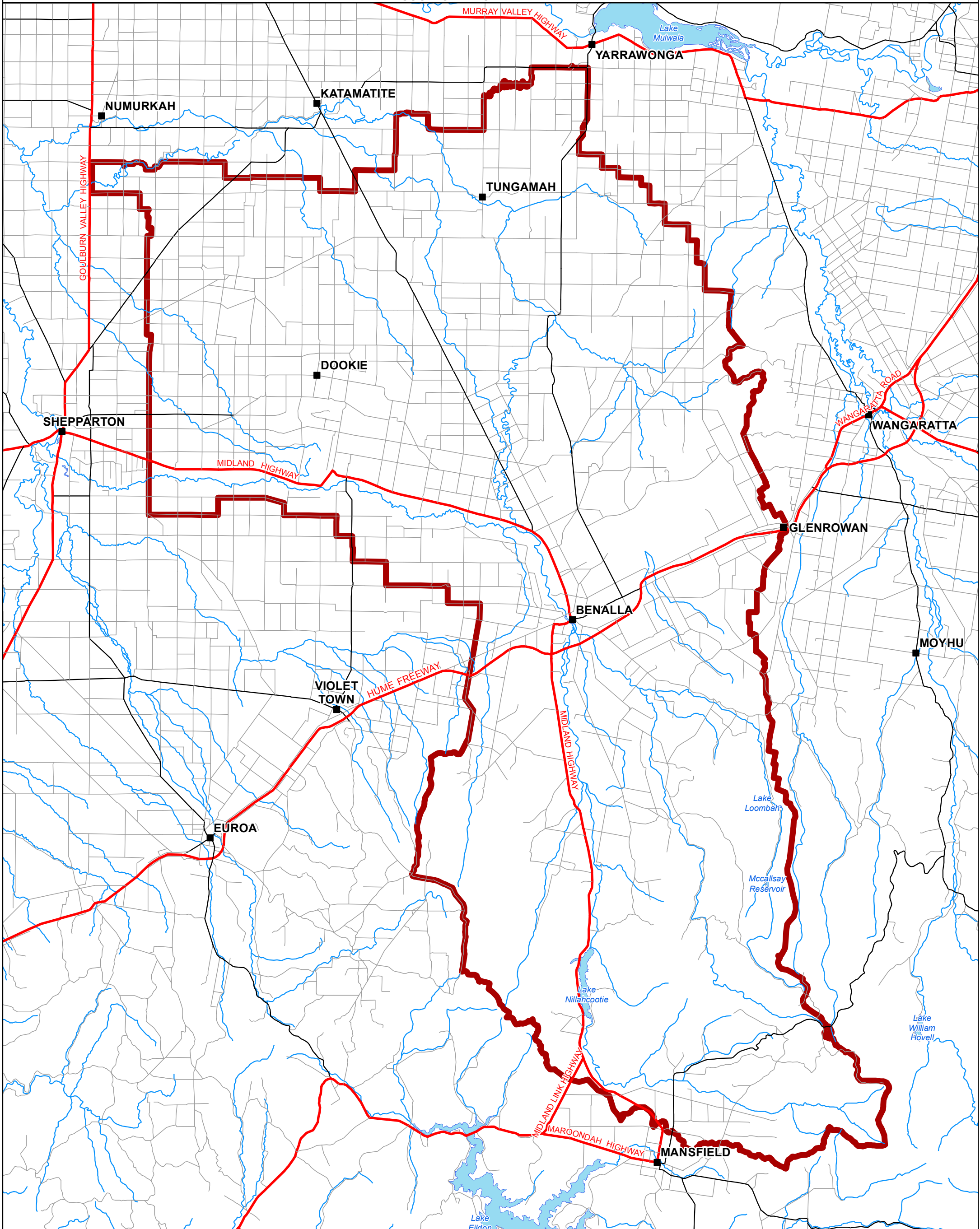


BROKEN GROUNDWATER MANAGEMENT AREA: LEGL. /15-279

GOULBURN-MURRAY WATER



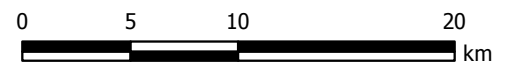
GOULBURN-MURRAY WATER
IR174535
29 MAY 2015
GOULBURN-MURRAY WATER
40 CASEY STREET (PO BOX 165)
TATURA VIC 3616
Ph (03) 5833 5500 Fax (03) 58245827
gissupport@g-mwater.com.au



Legend

- Broken GMA
- Major Road
- Freeway/Highway
- Minor Road

SCALE AT A3 1:350,000



The content of this product is provided for information purposes only. No claim is made as to the accuracy of authenticity of the content of the product. In no event will G-MW, its agents, instrumentalities and employees be liable for the accuracy of the information contained within this product nor its use of reliance placed on it. The information used within this product is provided on the basis that all persons accessing the information undertake responsibility for assessing the relevance and accuracy of its content.
Z:\2015_Products\IR174535\IR174535_Broken_Boundary_LEGL.mxd