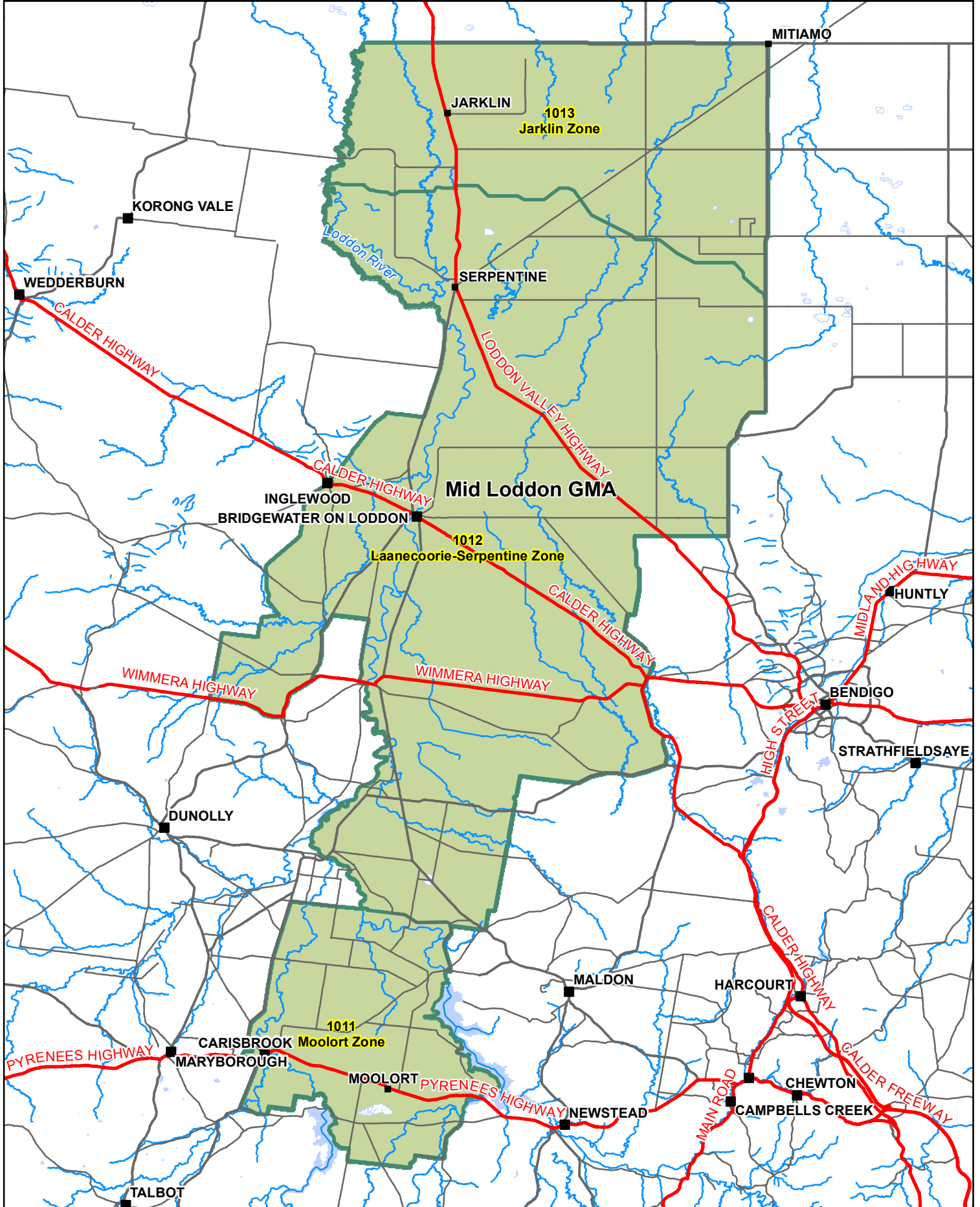

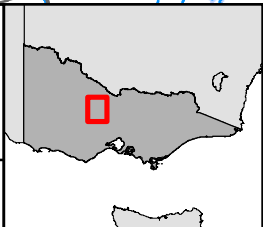


MID LODDON GROUNDWATER MANAGEMENT AREA

GOULBURN-MURRAY WATER

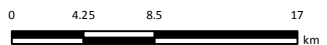



GMW-12-124
 17 SEP 2012
 GOULBURN-MURRAY WATER
 40 CASEY STREET (PO BOX 165)
 TATURA VIC 3616
 Ph (03) 5833 5500 Fax (03) 58245827
 gmsupport@g-mwater.com.au



Legend

- Freeway/Highway
- Major Road
- Semi-Major Road
- Mid Loddon GMA

SCALE AT A4 1:450,000

 The content of this product is provided for information purposes only. No claim is made as to the accuracy of authenticity of the content of the product. In no event will G-MW, its agents, instrumentalities and employees be liable for the accuracy of the information contained within this product nor its use of reliance placed on it. The information used within this product is provided on the basis that all persons accessing the information undertake responsibility for assessing the relevance and accuracy of its content.
 Path: Z:\2012_Products\GMW-12-124\GMW-12-124_MidLoddon_10-1.mxd