

## Upper Goulburn GMA

The Upper Goulburn Groundwater Management Area (GMA) covers the Goulburn River catchment from downstream of Lake Eildon to Seymour. It includes the townships of Kinglake, Yea and Alexandra (shown on map overleaf).

Groundwater resources are managed under a local management plan approved by Goulburn-Murray Water (GMW) in 2013.

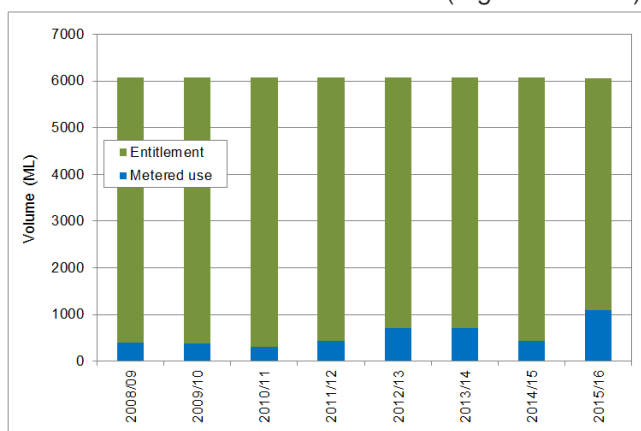
### Licensed groundwater entitlement and use

There is currently 6,057 megalitres per year (ML/yr) of licensed groundwater entitlement in the Upper Goulburn GMA. The majority of entitlement is held in the Goulburn and King Parrot zones (Table 1).

**Table 1 Licensed groundwater entitlement and use in the Upper Goulburn GMA in 2015/16**

Management zone	Entitlement (ML/yr)	Use (ML)
Acheron	294.0	94.1
Goulburn	3,082.0	273.3
Home	375.5	138.5
King Parrot	1,081.3	218.2
Lower Yea	362.0	174.6
Upper Yea	781.3	182.5
Yarck	81.0	6.0
<b>Total</b>	<b>6,057.1</b>	<b>1,087.2</b>

Metered use in the Upper Goulburn GMA in 2015/16 was 1,087.2 ML or 18% of total licensed entitlement. This is approximately two and a half times the volume used in 2014/15 (Figure 1).



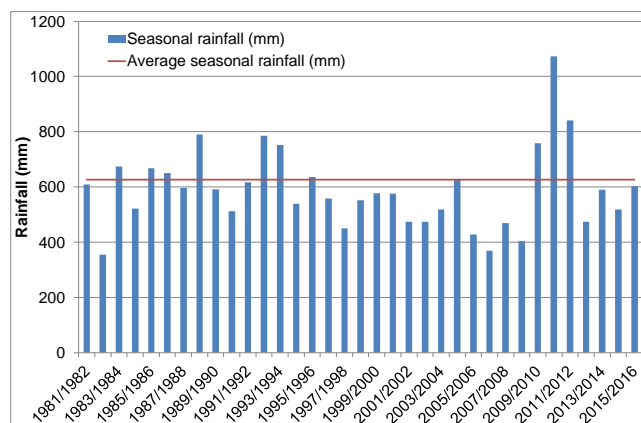
**Figure 1 Metered groundwater use in the Upper Goulburn GMA**

### Groundwater trading

Customers may transfer entitlement on a temporary or permanent basis within or between management zones, provided entitlement limits documented in the local management plan are not exceeded. Two temporary trades were undertaken in the Upper Goulburn GMA in 2015/16; one transfer was undertaken within the Home Zone for a total of 7 ML/yr and one within the Goulburn Zone for 24 ML/yr. No permanent transfers were undertaken in 2015/16.

### Groundwater levels

Groundwater levels fluctuate seasonally in response to climatic conditions and groundwater extraction. The hydrographs overleaf show groundwater levels have remained relatively stable since monitoring bores were installed in 2010 and 2011, despite below-average rainfall over the last four water years (1 July to 30 June) (Figure 2).



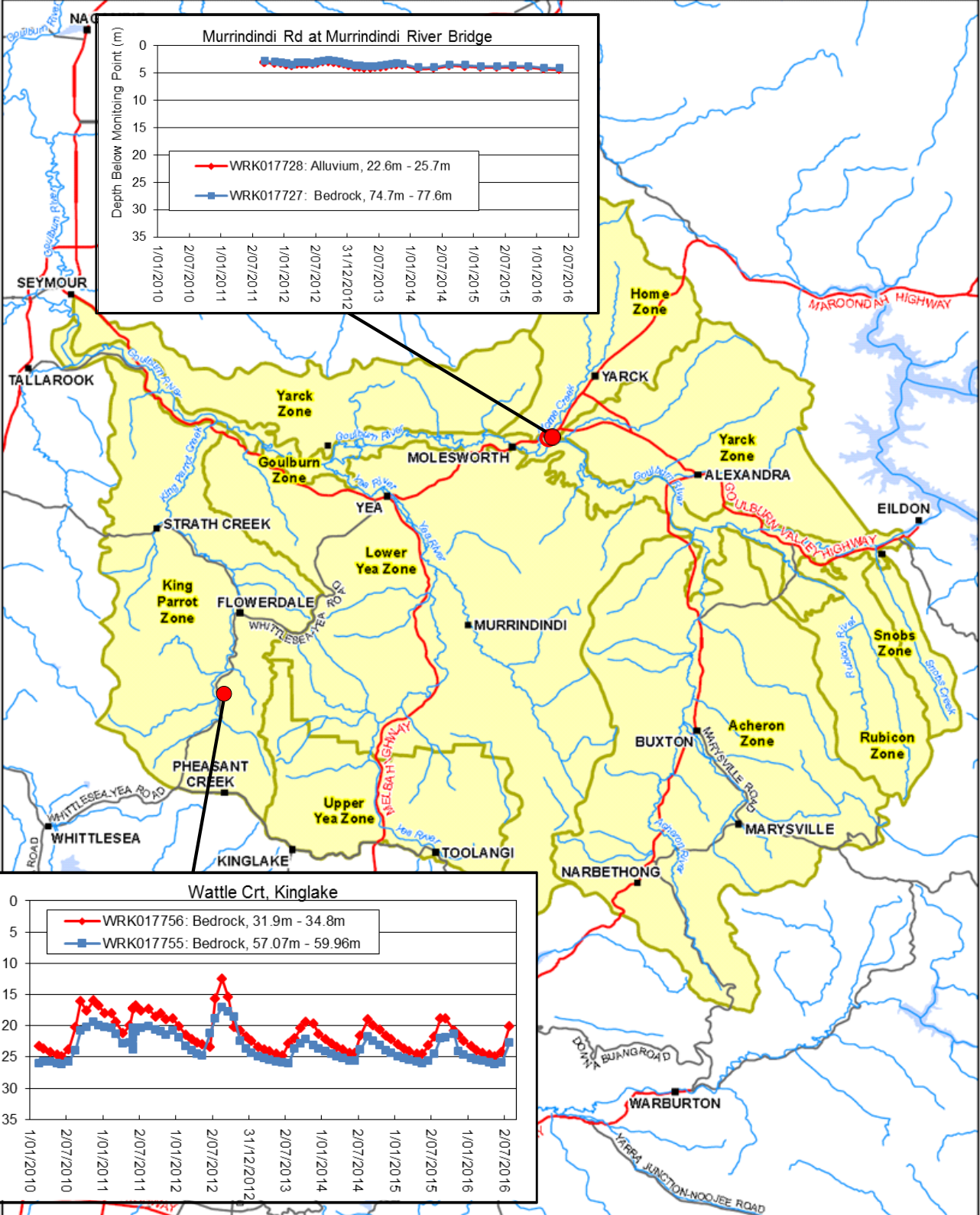
**Figure 2 Rainfall at Yea (Bureau of Meteorology gauging station number 88067)**

### Where can I get more information?

You can download a copy of the Upper Goulburn Groundwater Management Area Local Management Plan from the GMW website [www.gmwater.com.au](http://www.gmwater.com.au) or call Karina Joy at GMW on 1800 013 357.

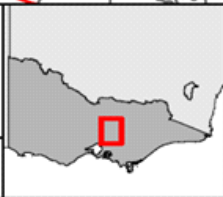
# UPPER GOULBURN GROUNDWATER MANAGEMENT AREA

GOULBURN-MURRAY WATER



**GMW-13-142**  
25 Sep 2013

GOULBURN-MURRAY WATER  
480 CA31(3) 4111 (T) 03 529 1953  
180 GARDNER VIC 3018  
\* (03) 529 1953 Fax (03) 529 3827  
goulburn@gmw.com.au



**Legend**

- Freeway/Highway
- Major Road
- Upper Goulburn GMA
- Waterway
- Waterbody

SCALE AT A4 1:500,000

0 4.75 9.5 19 km

The content of this document is provided for information purposes only. No liability is made as to the accuracy or completeness of the content of the document or representation of any goods, services, facilities and equipment. It is for the user's reference only. The information contained in this document is provided on the basis of the information available at the time of publication. It is not intended to constitute an offer of any financial product or service. It is not intended to constitute an offer of any financial product or service. It is not intended to constitute an offer of any financial product or service.

September, 2016; DM #4262799