

Things to do

Fishing

Lake Eppalock is home to Golden Perch, Red Fin, Trout and Murray Cod, with a stocking program ensuring healthy supplies.

Red Fin	Derrinal & Kimbolton pools (north of the lake)
Murray Cod	Mouths of Coliban & Campaspe rivers
Golden Perch	

For the latest information on fishing in Victoria, contact Fisheries Victoria on 136 186, and don't forget your Recreational Fishing Licence!

Camping

Camping facilities at Lake Eppalock are available in the four caravan parks located around the lake.

You can find out more about the parks by visiting www.gmwater.com.au/recreation-tourism/caravan-parks.

In addition to the parks there are plenty of B&Bs and holiday houses available year round. For more information visit www.bendigotourism.com.

Boating

A 5 knot speed limit applies at any level within 50 metres of the water's edge; other vessels, navigation aids, swimmers and fixed or floating structures; and within 100 metres of vessels displaying a dive flag.

Keep a lookout at all times for hazards and other vessels.

Refer to the Victorian Recreational Boating Safety Handbook (available online at transportsafety.vic.gov.au) for information on staying safe while boating.

Water levels

GMW's customers use the water in our storages to produce food and fibre, supply towns and businesses, and protect and improve waterway health.

In dry conditions the lake may have very low inflows. At the same time, customers will need more water and as a result the water level of Lake Eildon may decrease.

Reduced water levels mean that you need to stay vigilant about your safety and the safety of others in your care.

You can find more information about water levels at www.gmwater.com.au/storage-levels.

Blue-green algae

At times, the level of blue-green algae in storages can exceed safe limits. When this happens you should avoid direct contact with water as the algae can cause skin rashes, itchiness; sore eyes, ears and nose; and nausea.

If unsafe blue-green algae levels occur, warning signs will be positioned at major recreational areas around the storage.

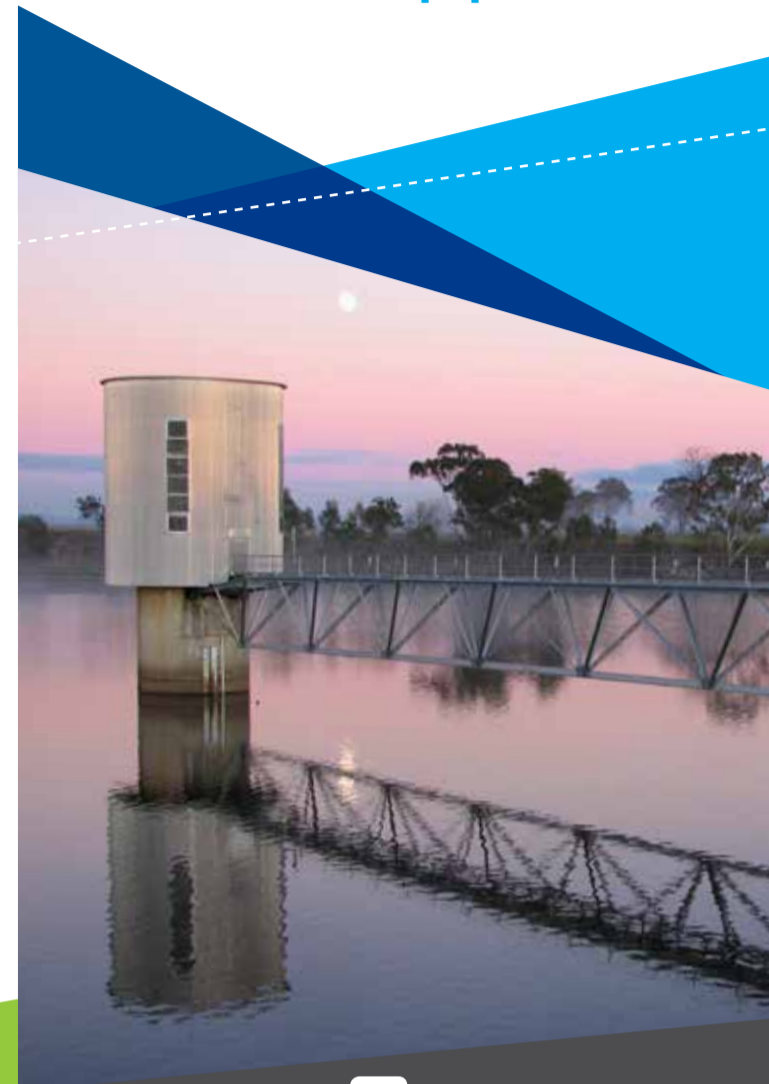
Recreational users can still boat, sightsee and enjoy other activities that don't involve direct contact with the water.

Blue-green algae warnings can be found online at www.gmwater.com.au/bluegreenalgae-alert or by phoning the 24 hour GMW blue-green algae hotline on (03) 5826 3785.

Lake Eppalock is one of 24 lakes, storages and weirs managed by GMW to capture, store and deliver 70% of Victoria's stored water across a region about the same size as Tasmania.



For more information on GMW and its operations visit www.gmwater.com.au



/goulburnmurraywater

@GMWater_Lakes_Dams
#GMWater_Lakes_Dams

About Lake Eppalock

Lake Eppalock is in the heart of central Victoria's goldfields, just a 20 minute drive from Heathcote, 30 minutes from Bendigo and 90 minutes from Melbourne.

Built in 1964 to supply water for irrigation, the lake has become one of the most popular recreational inland waterways in Victoria and is an ideal location for waterskiing, fishing, boating and swimming.

Today the lake supplies irrigation, environmental and stock and domestic water to entitlement holders as far north as Echuca as well as providing urban supplies to Bendigo, Heathcote and other central Victorian towns.

It's also home to 34 recreational clubs, and four caravan parks.



Facilities

Free to visit, Lake Eppalock has facilities to suit every visitor, including four caravan parks, picnic areas with electric barbecues and public toilets, a kiosk and four public boat ramps

Events

GMW's lakes, dams and reservoirs are ideal places for events. If you would like to host an event at one of our reserves, visit www.gmwater.com.au/events.

DON'T FORGET YOUR WATER SMARTS



gmwater.com.au/watersmarts

Caring for Lake Eppalock

Lake Eppalock is a beautiful natural resource. You can help care for the lake so it can be enjoyed now and into the future.

- Campfires aren't allowed in GMW reserves or foreshore and lakebed areas.
- Electric barbecues are available at some reserves (see map).
- Please refer to the local council for landfill services and consider the environment when disposing of your litter. Penalties apply for illegal dumping of rubbish.
- Don't remove vegetation from the foreshore, or bring any in.
- Don't interfere with animals or their habitats, and don't feed them.
- Boat wash can cause erosion, keep to 5 knots within 50 metres of the shore.
- Vehicles and trail bikes are only allowed on public roads within the reserve. All vehicles must be registered and users must be licensed.
- Keep the waterway healthy by not using soap, toothpaste or detergent in the lake.
- Dogs and horses must be on a lead and/or under control at all times and aren't allowed in the lake. Please clean up after your pets.

A copy of GMW's recreational by-law can be found online at www.gmwater.com.au/recreation-tourism

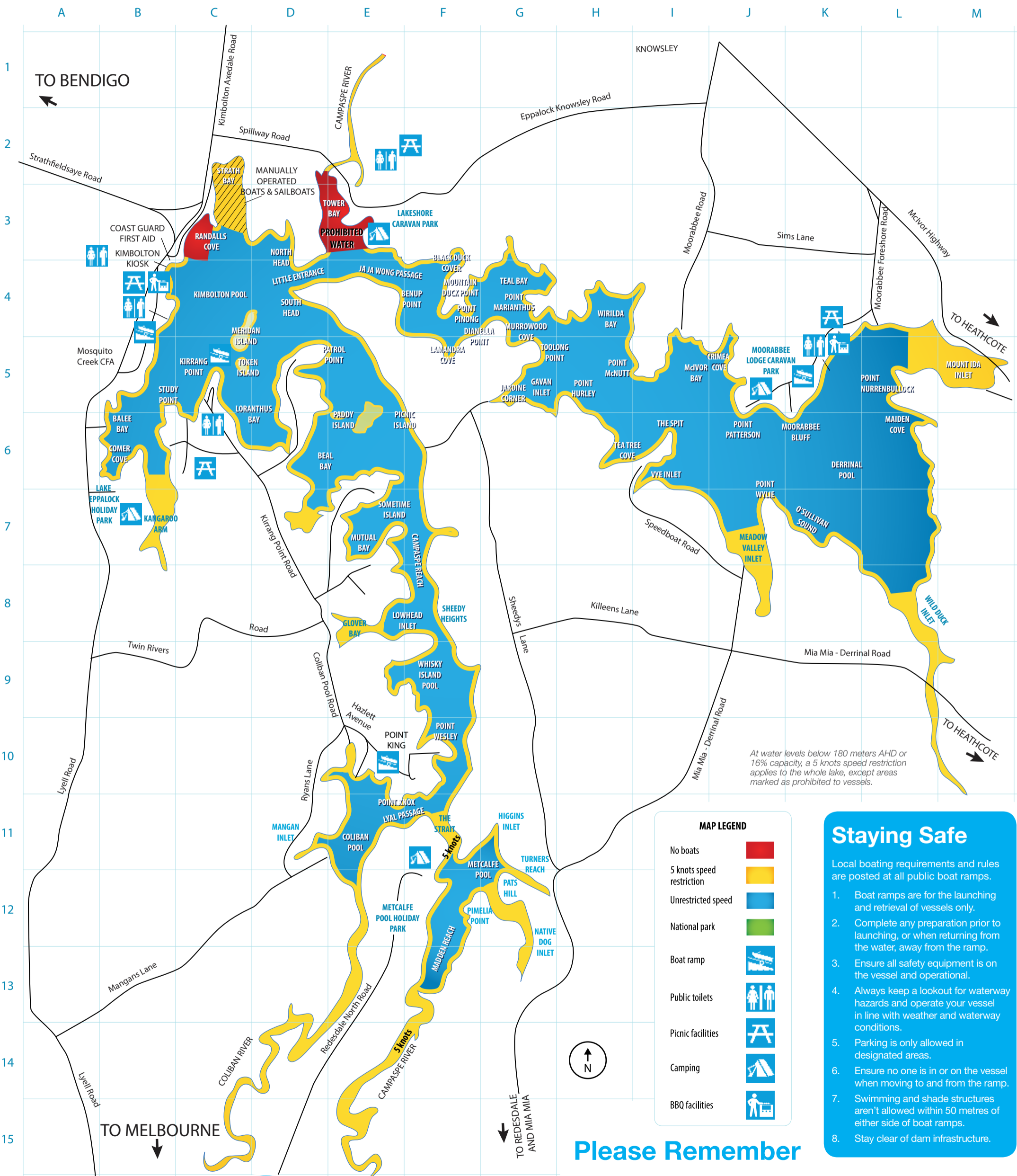


Lake Eppalock boating and facilities guide



0 km 1 km 2 km
Scale of Kilometres

Boats containing sleeping accommodation and/or toilets are prohibited on Lake Eppalock.
Parasailing is prohibited without prior written consent by GMW.



MAP LEGEND

- No boats
- 5 knots speed restriction
- Unrestricted speed
- National park
- Boat ramp
- Public toilets
- Picnic facilities
- Camping
- BBQ facilities

Staying Safe

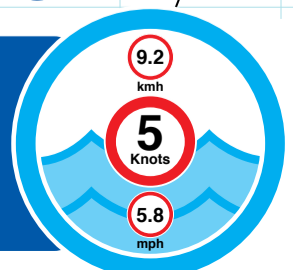
- Local boating requirements and rules are posted at all public boat ramps.
1. Boat ramps are for the launching and retrieval of vessels only.
 2. Complete any preparation prior to launching, or when returning from the water, away from the ramp.
 3. Ensure all safety equipment is on the vessel and operational.
 4. Always keep a lookout for waterway hazards and operate your vessel in line with weather and waterway conditions.
 5. Parking is only allowed in designated areas.
 6. Ensure no one is in or on the vessel when moving to and from the ramp.
 7. Swimming and shade structures aren't allowed within 50 metres of either side of boat ramps.
 8. Stay clear of dam infrastructure.



Please Remember

- No camping or fires allowed on GMW foreshore land.
- Confine vehicles and motor bikes to formed public roads.
- Take your rubbish home.

On inland waters a 5 knot speed limit applies within 50 metres (except where otherwise indicated) of the water's edge, other vessels, navigation aids, swimmers and fixed or floating structures.
Current water levels can be found at www.gmwater.com.au/water-levels



Scan to visit the Lake Eppalock interactive water tool

<http://bit.ly/LakeEppalockLevels>