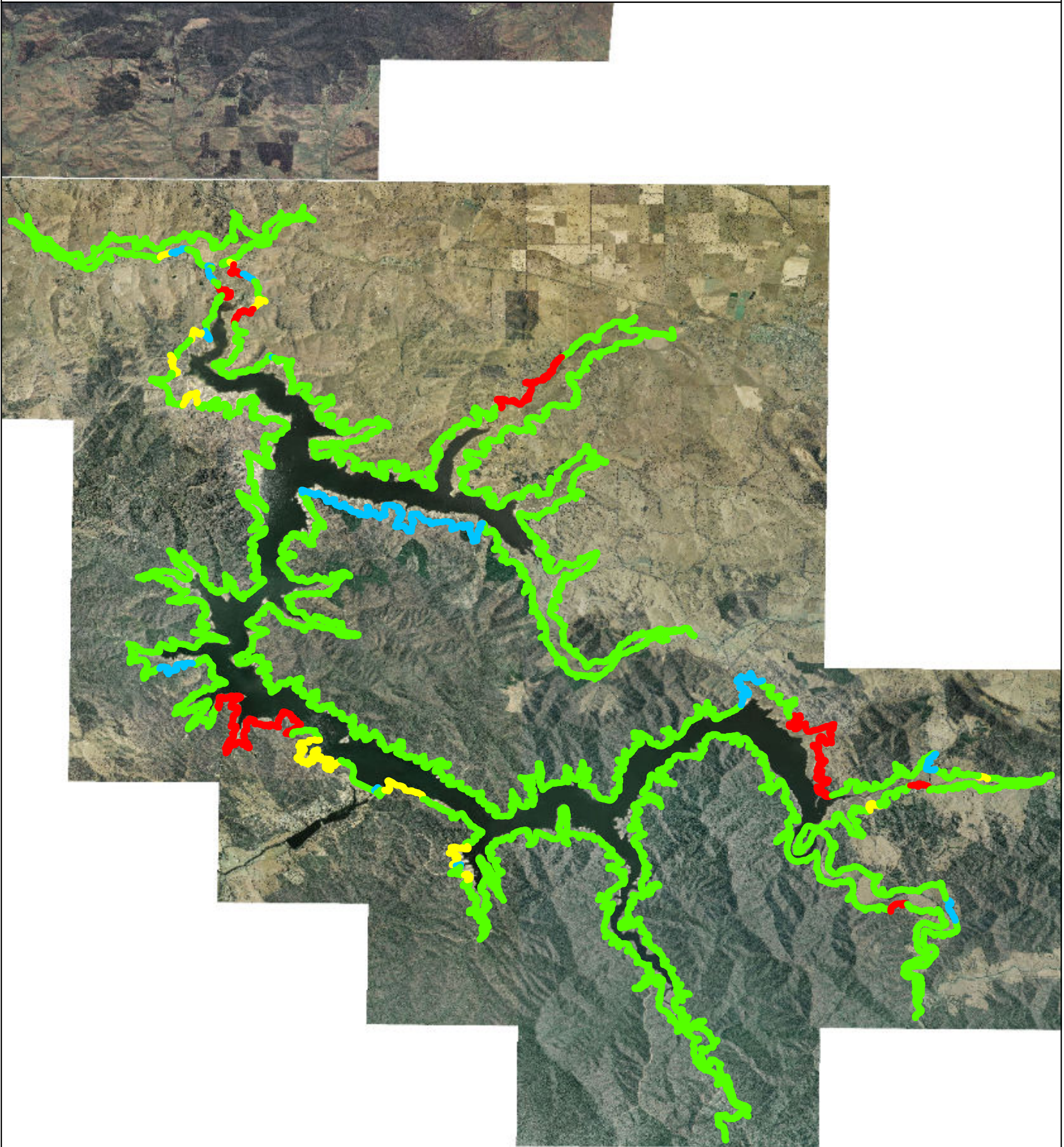


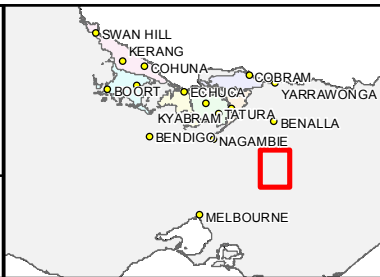
Mooring & Jetty Plan - Lake Eildon

GOULBURN-MURRAY WATER



GMW-13-031
3/04/2013

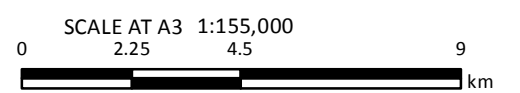
GOULBURN-MURRAY WATER
40 CASEY STREET (PO BOX 165)
TATURA VIC 3616
Ph (03) 5833 5500 Fax (03) 58245827
gissupport@g-mwater.com.au



Legend

ZoneDescription

- Commercial Zone
- Environmental Zone
- Private Infrastructure Zone
- Public Use Zone



The content of this product is provided for information purposes only. No claim is made as to the accuracy or authenticity of the content of the product. In no event will G-MW, its agents, instrumentalities and employees be liable for the accuracy of the information contained within this product nor its use or reliance placed on it. The information used within this product is provided on the basis that all persons accessing the information undertake responsibility for assessing the relevance and accuracy of its content.